



Trafo Hall in a Transformer Station

The 1920s-built transformer substation on the banks of the river Isar, was rebuilt in 2001 as an events location. Trafo hall (250m²), Studio (160m²) and the Cellar-Lounge (160m²) may be rented together or separately, and can be freely combined with one another.

The industrial charm of the building, with its large outside area (courtyard 350 m²) is underlined by a very modern, stylishly compact extension and appropriate décor. Technical specifications such as CAT 5-wiring throughout the building, load hooks (12t) in the Trafo Hall and easily realisable building projections make the Trafo Hall one of the most versatile locations in Munich.

Foyer and Gallery	700,- €
Foyer, Gallery and Hall	1,300,- €
Studio	900,- €
Cellar-Lounge	700,- €

The above prices are net, per day, not including additional costs.

Foyer

Width	11.50 m
Length	9.40 m
Height	6.00
Useable space	80 m ²



Gallery

Width	5.15 m
Length	9.30 m
Height	3.35 m
Useable space	45 m ²



Hall

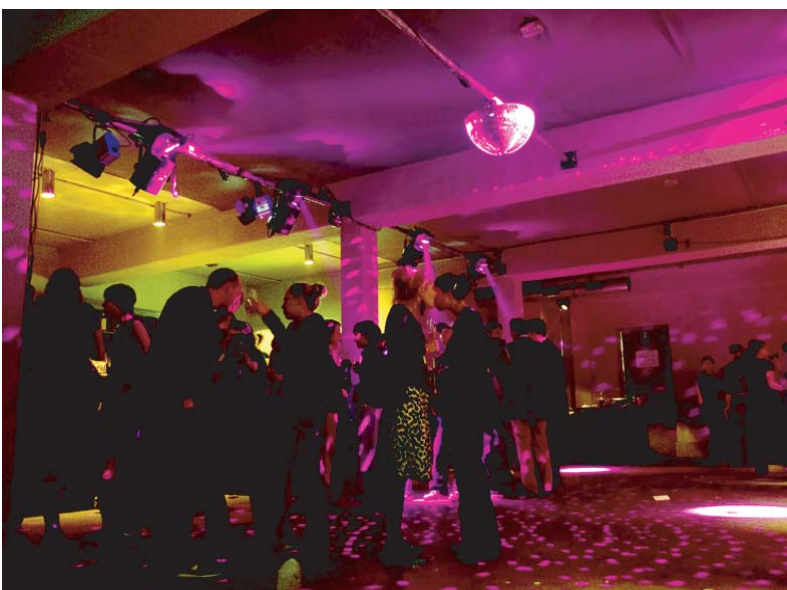
Width	11.50 m
Length	14.30 m
Height	6.00 m
Useable space	160 m ²
Row seating	180 pax



Additional rooms

Cellar-Lounge

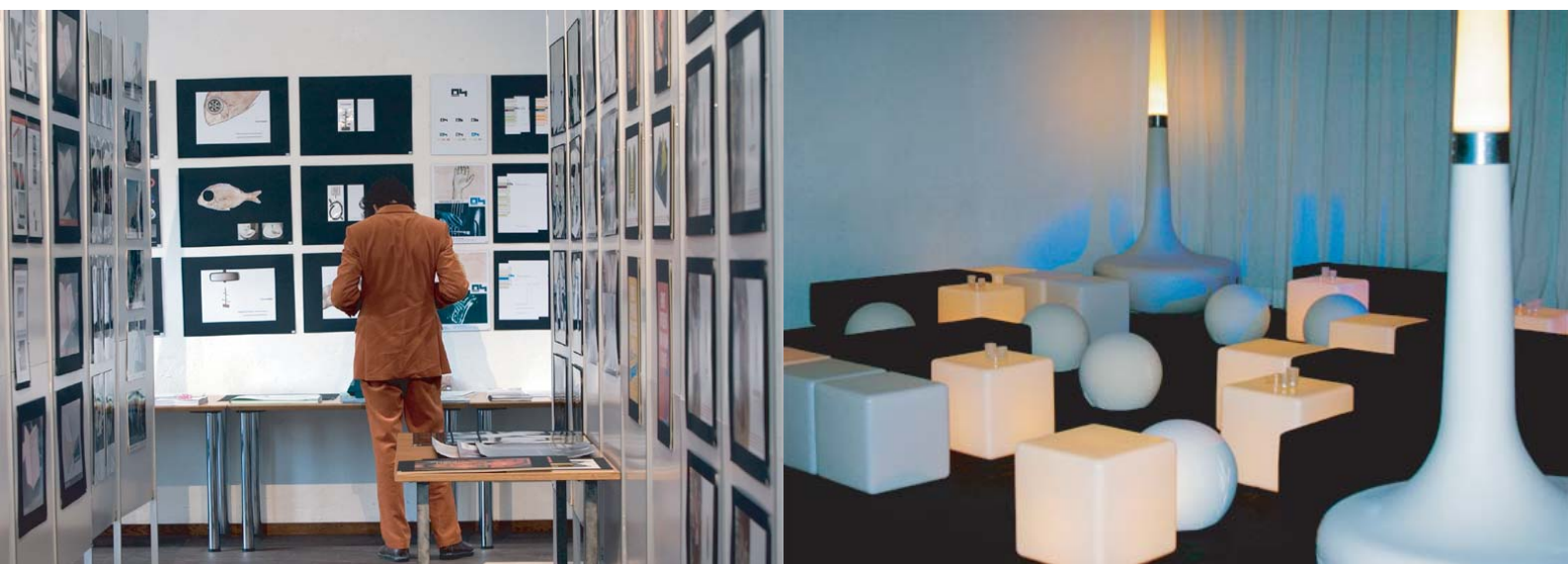
Width	8.00 m
Length	14.00 m
Height	3.50 m
Useable space	120 m ²
Row seating	100 pax



Additional rooms

Studio

Width	9.40 m
Length	9.40 m
Useable space	117 m ²
Row seating	120 pax



Location and Contact



h + s veranstaltungen gmbh
 Martin-Luther-Str. 2
 81539 München
 Tel: 089-890686-0
 www.hs-veranstaltungen.de
 E-Mail: info@hs-veranstaltungen.de

Airport Munich	35 km
A995	2 km
Munich City Center	3 km
Subway (U1/U2/U8)	2 min